



CJL ENGINEERING

FIRM OVERVIEW

CJL ENGINEERING is a multi-disciplined Mechanical/Electrical/Civil consulting engineering firm that offers a full range of services, including analysis and concept, construction budgeting, detailed construction documentation and construction administration. With offices in Pittsburgh, Johnstown, PA, and Youngstown, OH, CJL has a combined staff of over 110 personnel. The original office was established in 1938.



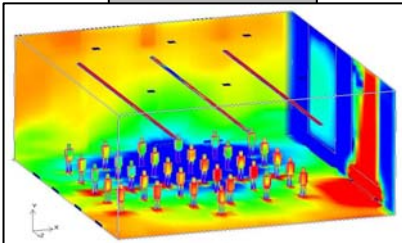
CJL ENGINEERING has substantial experience in the design, construction and commissioning of high performance and LEED® certified buildings, emphasizing integrated design and operational strategies for sustainable site development, water conservation, energy efficiency, resource conservation, and indoor environmental quality.



CJL Energy Solutions supplies engineering, process and business consulting and operational services in the energy and sustainability field. Our main market segments are institutional, government, commercial and industrial customers with deep commitment to long term sustainability.

Areas of specialization provided by **CJL ENGINEERING** include:

- HVAC Systems
 - Boiler
 - Chiller Central Plants
 - Geothermal Heat Pump Systems
 - Life Safety Systems
- Electrical Systems
 - Primary Power and Distribution
 - Cogeneration
 - Emergency, Standby Power
- Plumbing
- Fire Detection and Protection
- Civil Engineering
- LEED® Green Building Design
- Energy Solutions
- Architectural Lighting and Controls
- Telecommunications
- Voice/Data/Audiovisual
- Security
- Power System/Quality Evaluations
- Energy Conservation Studies
- Life Cycle Analyses
- Retrofit Evaluations
- Building Management Systems
- Commissioning



CJL ENGINEERING serves a broad range of clients that include: Healthcare (Hospitals/Medical Centers), Performing Arts Centers and Theaters, Libraries, Colleges and Universities, Schools (K-12), Government and Secure Facilities, High Tech Buildings, Mission Critical Data Centers, Hotels, Resorts, Apartments, Retirement and Assisted Living Communities, Central Plants and Utilities, Green Buildings, Science, Laboratory and Research Facilities, and Telecom Facilities, Office Buildings, Historic and Adaptive Retrofit, Transportation, and Master Planning and Design.

